

Endometrial cancer metastatic to the transverse colon mimicking colorectal cancer

Qinghua Cao, MD¹, Yixuan Sun, MD^{2,*} and Jun Li, PhD^{2,*}

¹Department of Pathology, Yantai Affiliated Hospital of Binzhou Medical University, Yantai, Shandong, China; ²Department of Radiology, Yantai Affiliated Hospital of Binzhou Medical University, Yantai, Shandong, China * (E-mail: 1647468488@qq.com junli@bzmc.edu.cn).

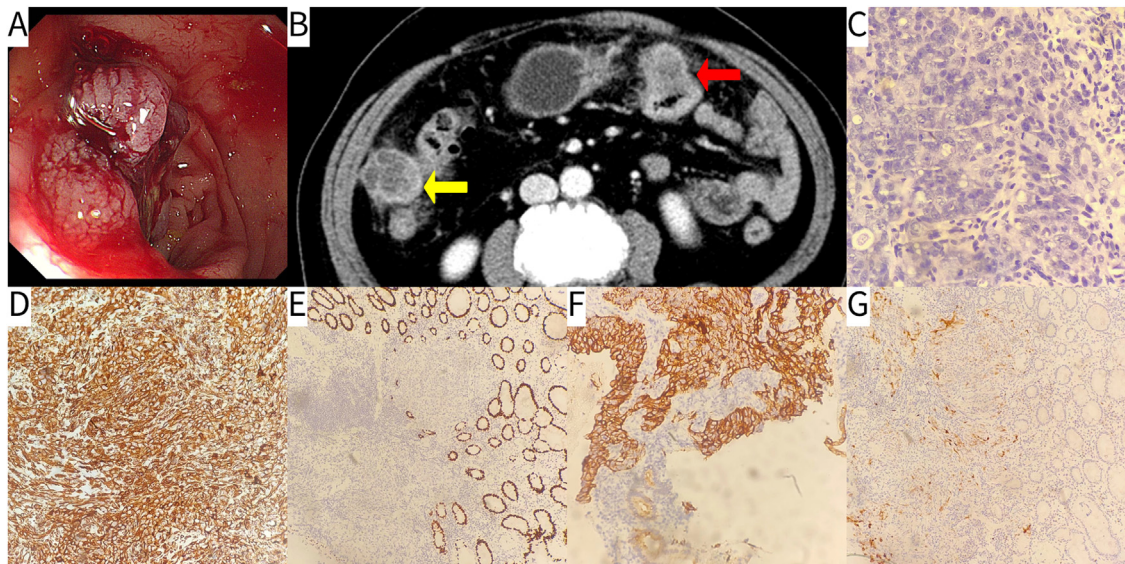


FIG. 1.

CASE PRESENTATION

A 68-year-old woman presented with a month history of formless stool. She had received hysterectomy for endometrial cancer 2 years ago. The level of cancer antigen 125 was elevated (46.77 U/mL; normal level, 0–35 U/mL). Other tumor markers were normal, including alpha fetoprotein, carcinoembryonic antigen and cancer antigen 199. Colonoscopy (Fig. 1A) showed a 50% circumferential extent tumor with superficial ulcer in the transverse colon, 60 cm from the anus. Abdominal contrast enhanced CT (Fig. 1B) demonstrated an oval mass involving the anterior wall of the transverse colon (red arrow), approximately 2.4 cm in diameter. A ring-like enhanced oval mass was also revealed in the right paracolic gutter (yellow arrow), approximately 3.2 cm in diameter. No other lesion was found, including the liver and lymph nodes. Photomicrograph of a colonoscopic biopsy of the mass in the transverse colon indicated metastatic endometrioid adenocarcinoma (Fig. 1C: the tumor containing cribriform structure with gland fusion), with the following immunohistochemistry results:

Vimentin (+) (Fig. 1D), CDX-2 (-) (Fig. 1E), CK7 (+) (Fig. 1F), P16 (+) (Fig. 1G), CK20 (-), PR (-).

Common sites for endometrial cancer metastasis can involve most commonly the lymph nodes (48%), followed by the vagina, peritoneum, and lung.^{1,2} Metastatic endometrial cancer to the gastrointestinal track is quite rare.³ Given that metastatic colon cancer originating from endometrial cancer is mimicking colorectal cancer,¹ clinicians must therefore keep in mind the possibility of metastatic disease especially when there is a prior history of malignancy.

FUNDING

The author(s) received no financial support for the research, authorship, and/or publication of this article.

DECLARATION OF COMPETING INTEREST

The authors declared no potential conflicts of interest with respect to the research, authorship, and/or publication of this manuscript.

REFERENCES

1. **Koury E, Kwar H, Chahla E.** Metastatic endometrial cancer to the sigmoid colon masquerading as primary colorectal cancer. *Cureus*. 2021;13(11):e19646.
2. **Anstadt MJ, Lapetino SR, Defnet A, et al.** Endometrial adenocarcinoma metastatic to the colon masquerading as a primary colon cancer. *J Gastroenterol Hepatol Res*. 2012;1:40–43.
3. **Hubers JA, Soni A.** A rare case of endometrial cancer metastatic to the sigmoid colon and small bowel. *Case Rep Gastrointest Med*. 2017;2017:9382486.